

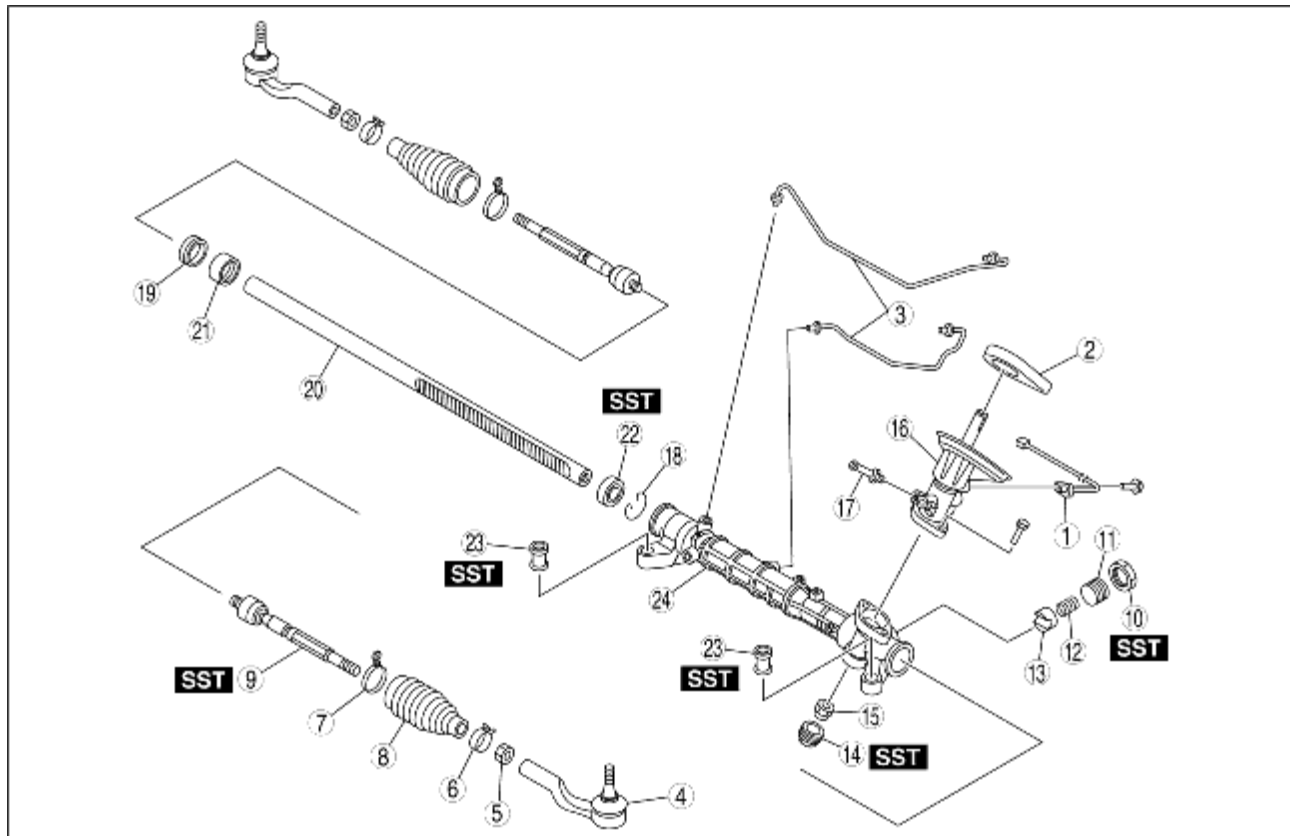
STEERING GEAR AND LINKAGE DISASSEMBLY

B3E061432960W02

Caution

- Place copper plates, rag, or similar material in a vise, when securing the mounting bracket portion of the steering gear.

1. Disassemble in the order indicated in the table.



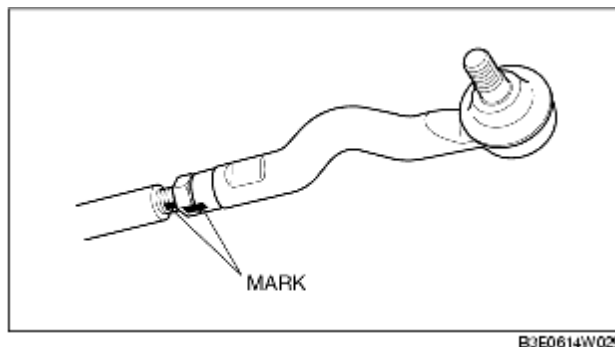
B3E0614W011

1	P/S angle sensor (LF only)
2	Floor seal
3	Oil pipe
4	Tie-rod end (See Tie-rod End Disassembly Note.)
5	Locknut
6	Boot clamp
7	Boot band
8	Boot
9	Tie rod (See Tie Rod Disassembly Note.)
10	Locknut (on adjusting cover)

	(See Locknut (on Adjusting Cover), Adjusting Cover Disassembly Note.)
11	Adjusting cover (See Locknut (on Adjusting Cover), Adjusting Cover Disassembly Note.)
12	Yoke spring
13	Support yoke
14	Housing cover
15	Locknut (on pinion shaft)
16	Pinion shaft and valve housing component
17	Return pipe
18	Clip
19	Stopper
20	Steering rack
21	Rack bushing
22	Oil seal (See Oil Seal Disassembly Note.)
23	Mounting rubber (See Mounting Rubber Disassembly Note.)
24	Gear housing

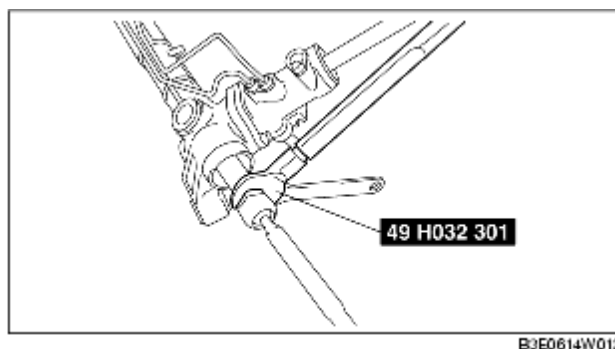
Tie-rod End Disassembly Note

1. Place alignment marks as shown in the figure for proper installation.



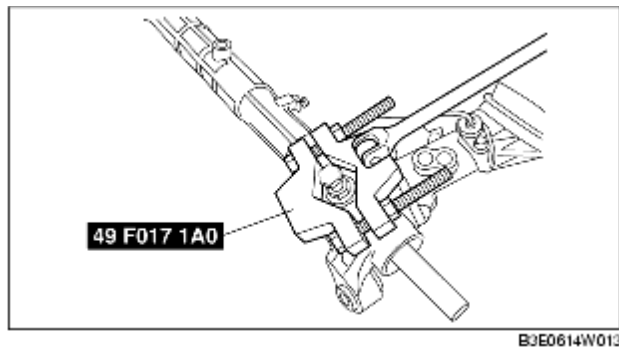
Tie Rod Disassembly Note

1. Fix the steering rack and remove the tie rod using the **SST**.



Locknut (on Adjusting Cover), Adjusting Cover Disassembly Note

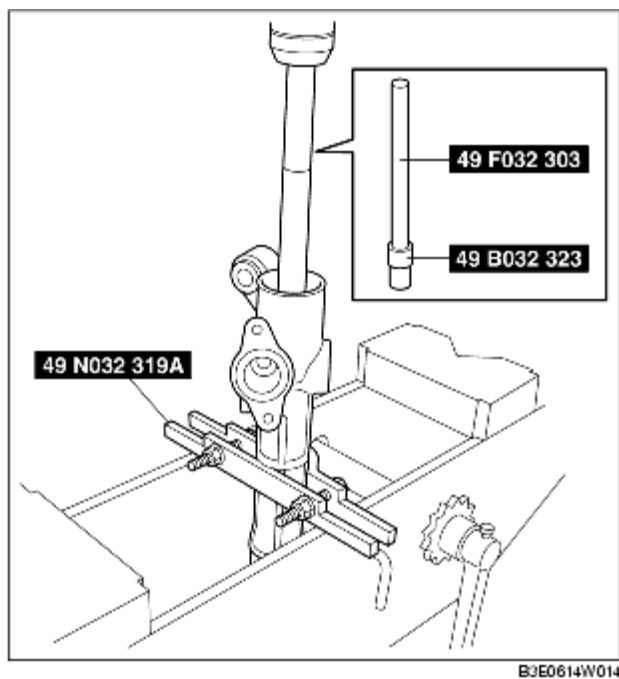
1. Remove the locknut using the **SST**.



2. Remove the adjusting cover.

Oil Seal Disassembly Note

1. Install the **SST** (49 N032 319A) to the gear housing with the raised part facing up as shown in the figure.
2. Insert the **SSTs** (49 F032 303, 49 B032 323) into the valve housing side.
3. Remove the oil seal using a press.



Mounting Rubber Disassembly Note

- Press the mounting rubber out from the gear housing using the **SSTs** and a press.

